

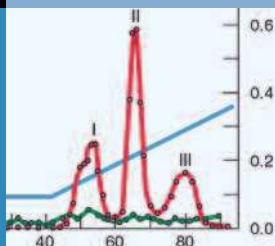
Thermo Scientific Revco Chromatography Refrigerators

Featuring IntrLogic
Microprocessor
Control

Our chromatography refrigerators are designed for a variety of applications requiring close temperature control, full access to chromatography instrumentation and easy set-up of instrumentation and apparatus within the chamber.



REC7504 chromatography refrigerator. Casters and glass doors are standard. Shown with optional temperature recorder.



Our chromatography refrigerators feature the IntrLogic microprocessor control system, positive airflow systems, industrial quality cabinet construction and extra-strength refrigeration compressors selected for industrial, clinical and scientific use.

IntrLogic Microprocessor Control

Our REC series refrigerators feature enhanced digital electronic technology designed to simplify operation and deliver greater accuracy (see pages 4 and 5).

- Adjustable temperature control, range +1°C to +8°C, factory pre-set to +4°C
- Icon-based controls and displays include graphic references for universal operation
- Setpoint security with key-operated triple-position master switch controls power to all systems for added safety
- Audible/visual warnings for over-temperature, undertemperature and power failure, with visual status reports on critical functions

- Graphic thermometer confirms proper operation at-a-glance, shows normal, high or low temperature condition; steady green for normal, flashing top bar for overtemperature, flashing bulb for undertemperature
- Advanced defrost sensor manages the defrost cycle, minimizing trace amounts of frost build-up to maintain refrigeration coil efficiency
- Enlarged digital display, resolution to within 0.1°C, improves visibility
- Alarm silence, ringback and automatic reset functions
- Push-button alarm test verifies sensor continuity
- Battery backup assures control panel function during power failure
- Remote alarm contacts are included on all models

Chromatography Refrigerators

Temperature Range: +1°C to +8°C, factory preset to +4°C (auto defrost)

Model No.	Cu.Ft. (L)	Voltage (Hz)	Amps/Breaker (Plug)	Door	Full Shelves	Half Shelves	Int. Dimensions* H x D x W inches (mm)	Ext. Dimensions* H x D x W inches (mm)	Ship Weight lb (kg)
REC2304A REC2304D REC2304V REC2304W	23.3 (659)	115 (60) 208/230 (60) 230 (50) 230 (50)	9.4/15 (P1) 6.0/15 (P4) 6.0/15 (P7) 6.0/15 (P8)	single, glass	0	2	58.0 x 29.0 x 24.0 (1470 x 730 x 610)	79.1 x 36.2 x 28.0 (2010 x 920 x 720)	425 (193)
REC3004A REC3004D REC3004V REC3004W	29.2 (826)	115 (60) 208/230 (60) 230 (50) 230 (50)	9.4/15 (P1) 6.0/15 (P4) 6.0/15 (P7) 6.0/15 (P8)	single, glass	0	2	58.0 x 29.0 x 30.0 (1470 x 730 x 760)	79.1 x 36.2 x 34.0 (2010 x 920 x 870)	435 (197)
REC4504A REC4504D REC4504V REC4504W	45.8 (1297)	115 (60) 208/230 (60) 230 (50) 230 (50)	15.0/20 (P2) 8.5/15 (P4) 8.5/15 (P7) 8.5/15 (P8)	double, sliding, glass	4	2	58.0 x 26.0 x 52.5 (1470 x 660 x 1330)	79.1 x 33.0 x 56.5 (2010 x 840 x 1440)	670 (304)
REC5004A REC5004D REC5004V REC5004W	51.1 (1447)	115 (60) 208/230 (60) 230 (50) 230 (W)	15.0/20 (P2) 8.5/15 (P4) 8.5/15 (P7) 8.5/15 (P8)	double, glass	4	2	58.0 x 29.0 x 52.5 (1470 x 730 x 1330)	79.1 x 36.2 x 56.5 (2010 x 920 x 1440)	580 (263)
REC7504A REC7504D REC7504V REC7504W	78.8 (2231)	115 (60) 208/230 (60) 230 (50) 230 (W)	16.0/20 (P2) 10.5/15 (P4) 10.5/15 (P7) 10.5/15 (P8)	triple, glass	8	2	58.0 x 29.0 x 81.0 (1470 x 730 x 2050)	79.1 x 36.2 x 85.0 (2010 x 920 x 2160)	965 (438)

* Published interior volumes are nominal; useable cu.ft. (L) capacities may be offset by shelves, drawers, blower coils, or cabinet protrusions. For specific cabinet dimensions and allowances, or for verification of clearance tolerances, contact our sales representative. Product performance may be affected by ambient temperature conditions, humidity conditions, sample loading preferences, and frequency of door openings. Contact our sales representative for specific inquiries regarding your application.

Cabinet Construction and Performance

- All refrigeration and control systems are top-mounted (except sliding glass door model REC4504, base mounted)
- Door lock provision on all models
- One duplex vapor-proof interior outlet, continuous on; separate power cord provided
- Door-activated light switch on all models except REC4504
- Model REC4504 has independent switch activated lights only
- Epoxy-coated, open wire shelves, adjustable in 1" (25 mm) increments; no tools required
- Multi-pane glass door(s) with spring loaded door closures and a 90° stay-open feature (except sliding door model REC4504)
- Positive, forced-air circulation maintains temperature uniformity at all shelf levels
- Peripheral closed-cell door gasket(s) maintain temperature integrity

- Two access ports, 2" (50 mm) diameter, with hinged covers
- Keyed door locks for security (except model REC4504)
- 2" (50 mm) casters, 2 locking, 2 non-locking, factory installed
- Separate power cord for interior outlets on models REC4504 and REC7504
- High-density, CFC-free urethane foam insulation protects cabinet from ambient temperature fluctuations and minimizes operating costs
- Interior and exterior surfaces are finished with a high-impact powder paint coating

Refrigeration System

- Heavy duty, industrial-grade, hermetically sealed compressors
- Automatic defrost for optimum cooling capacity
- Automatic condensate removal; no drain lines required

Optional Accessories

- Voltage safeguard, free standing
- Temperature recorder, 6" (152 mm) circular chart, 7-day drive
- Additional access port, 2" (50 mm) diameter, with cover
- Stainless steel interior and exterior surfaces
- Additional shelves, full or half size
- Heated glass doors and door swing variations available on most models

REC4504 chromatography refrigerator with sliding glass doors as standard. Shown with optional temperature recorder.

